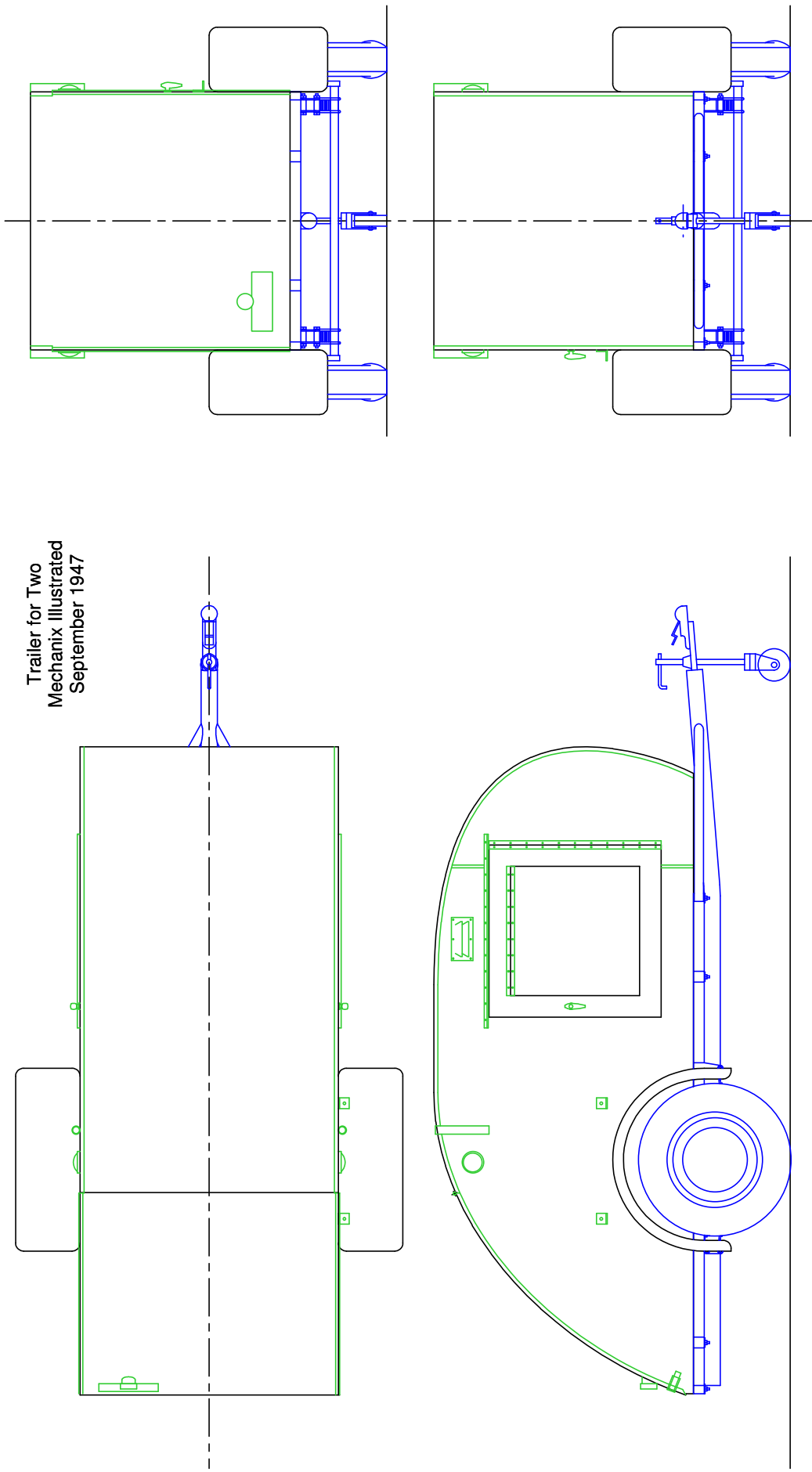
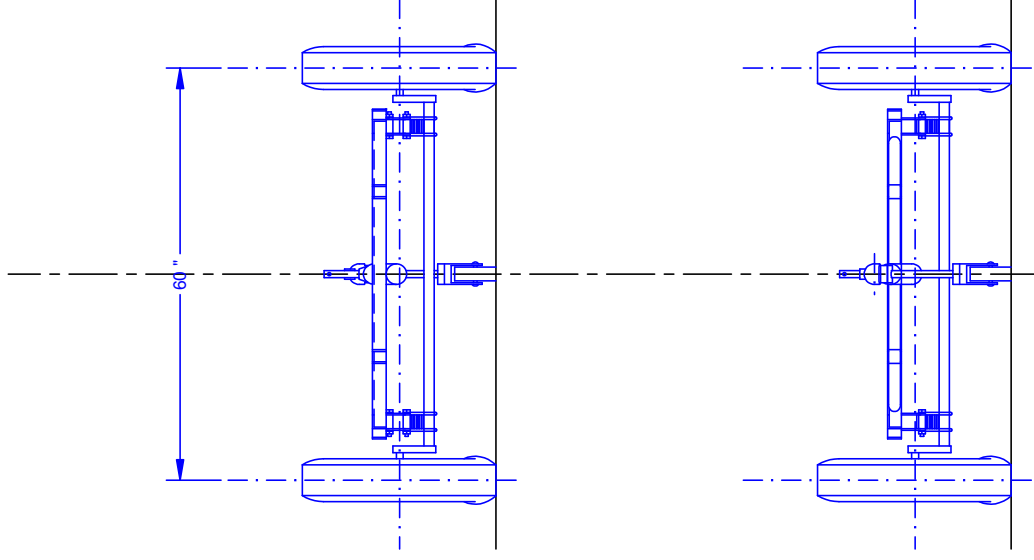
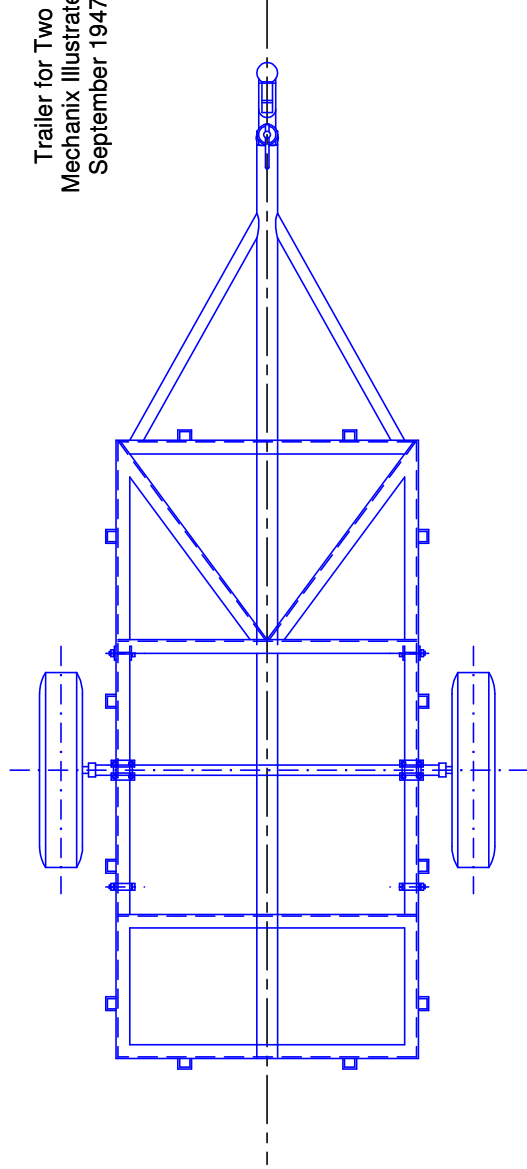


Trailer for Two
Mechanix Illustrated
September 1947

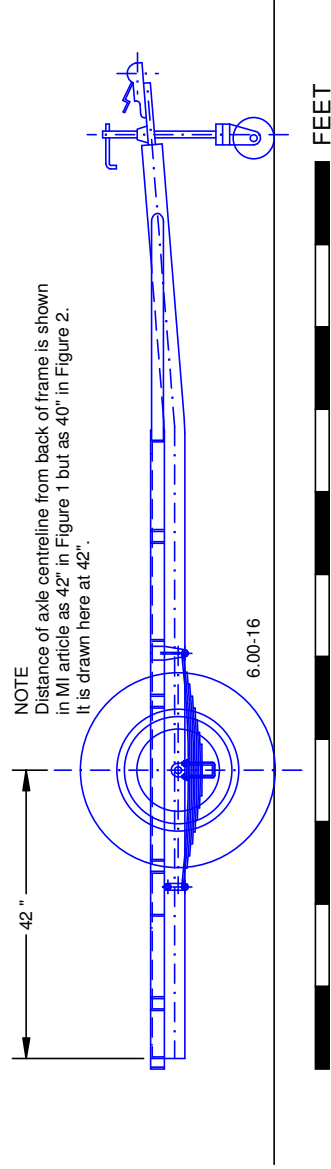


FEET

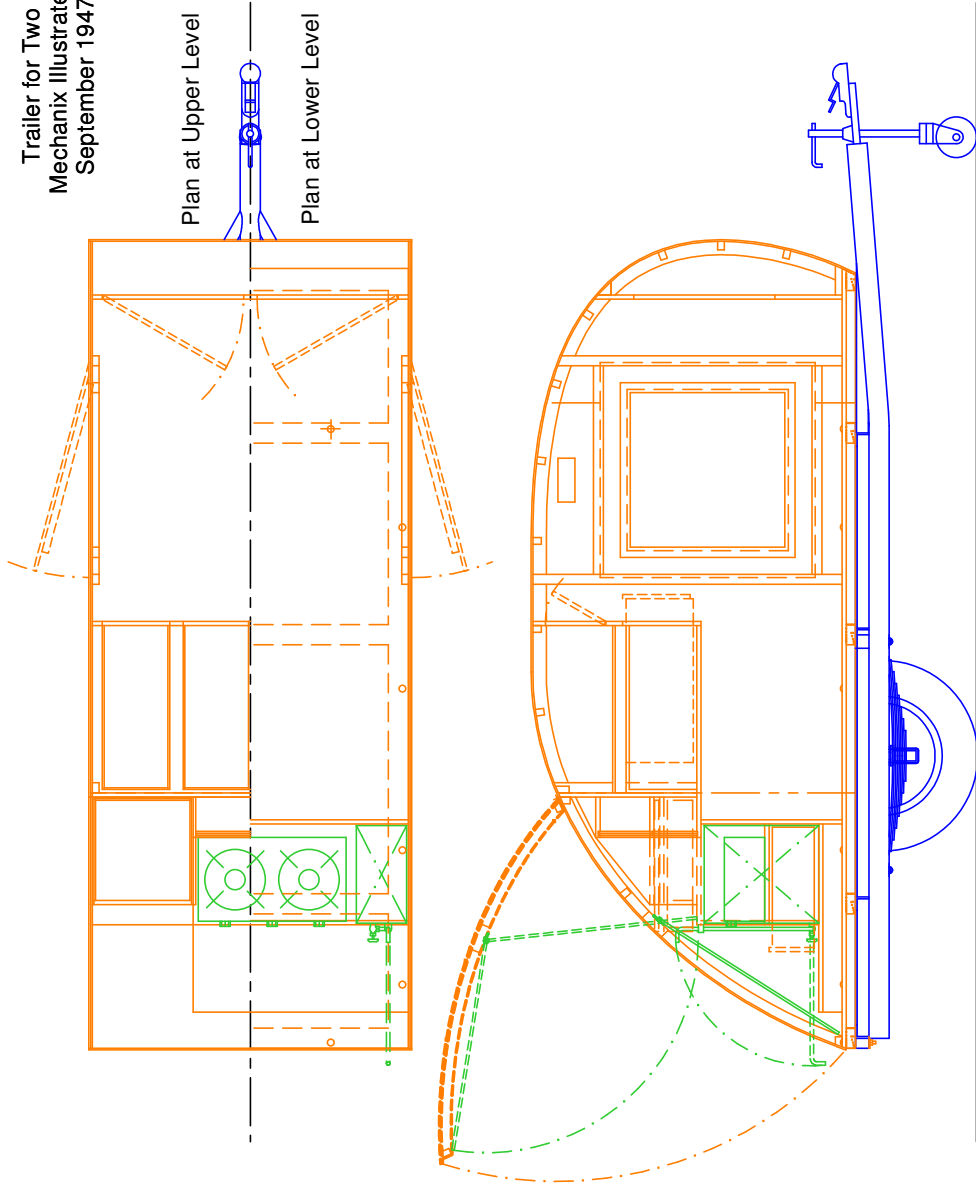
Trailer for Two
Mechanix Illustrated
September 1947



NOTE
Distance of axle centreline from back of frame is shown
in MI article as 42" in Figure 1 but as 40" in Figure 2.
It is drawn here at 42".



Trailer for Two
Mechanix Illustrated
September 1947



FEET

