

1 Frame
 1/2" = 1'-0"

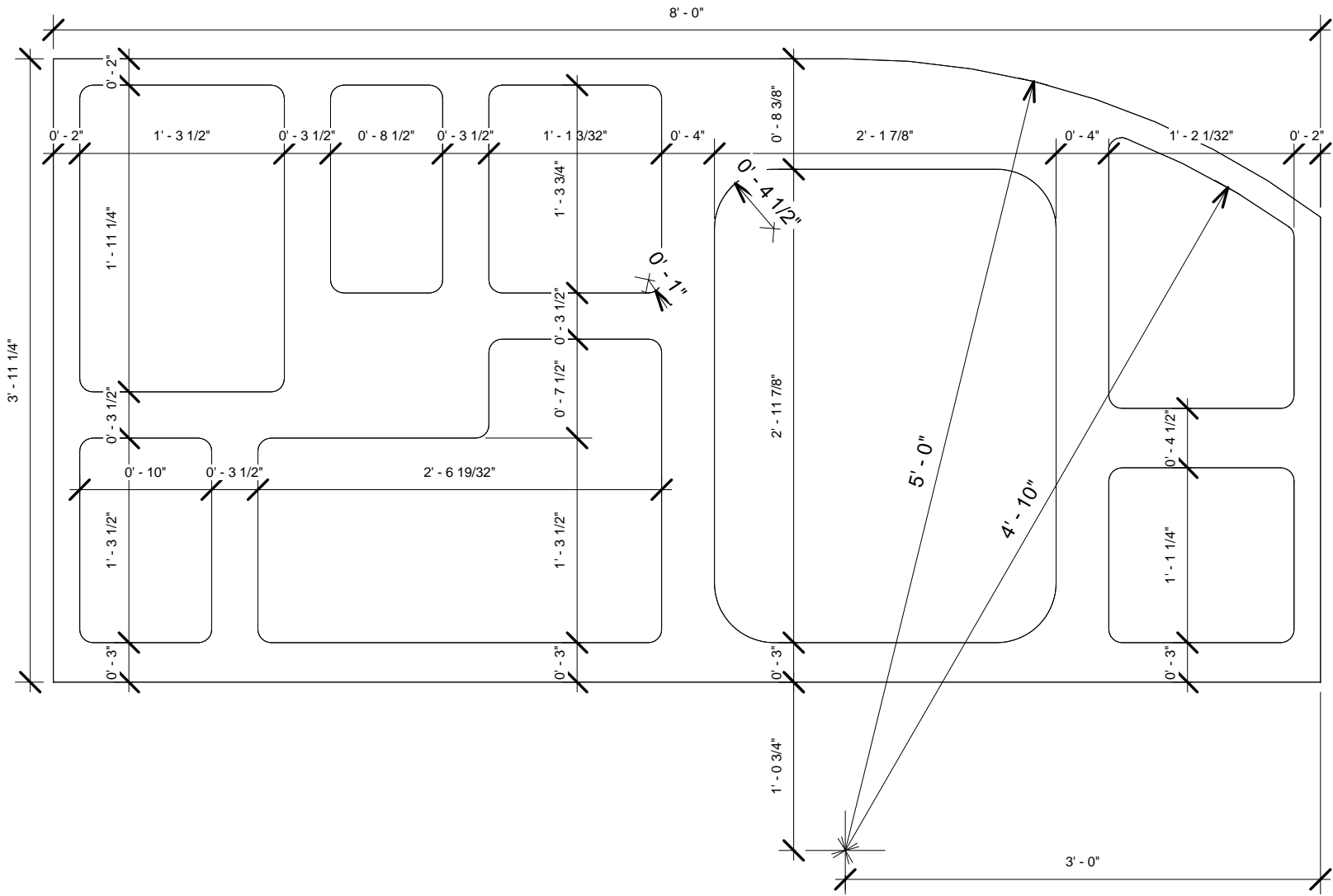
5x8 Off-Road

Frame

Project number	0001	100
Date	04/08/16	
Drawn by	Clint S.	
Checked by	Clint S.	Scale 1/2" = 1'-0"

1

Sidewall Cutouts
1" = 1'-0"



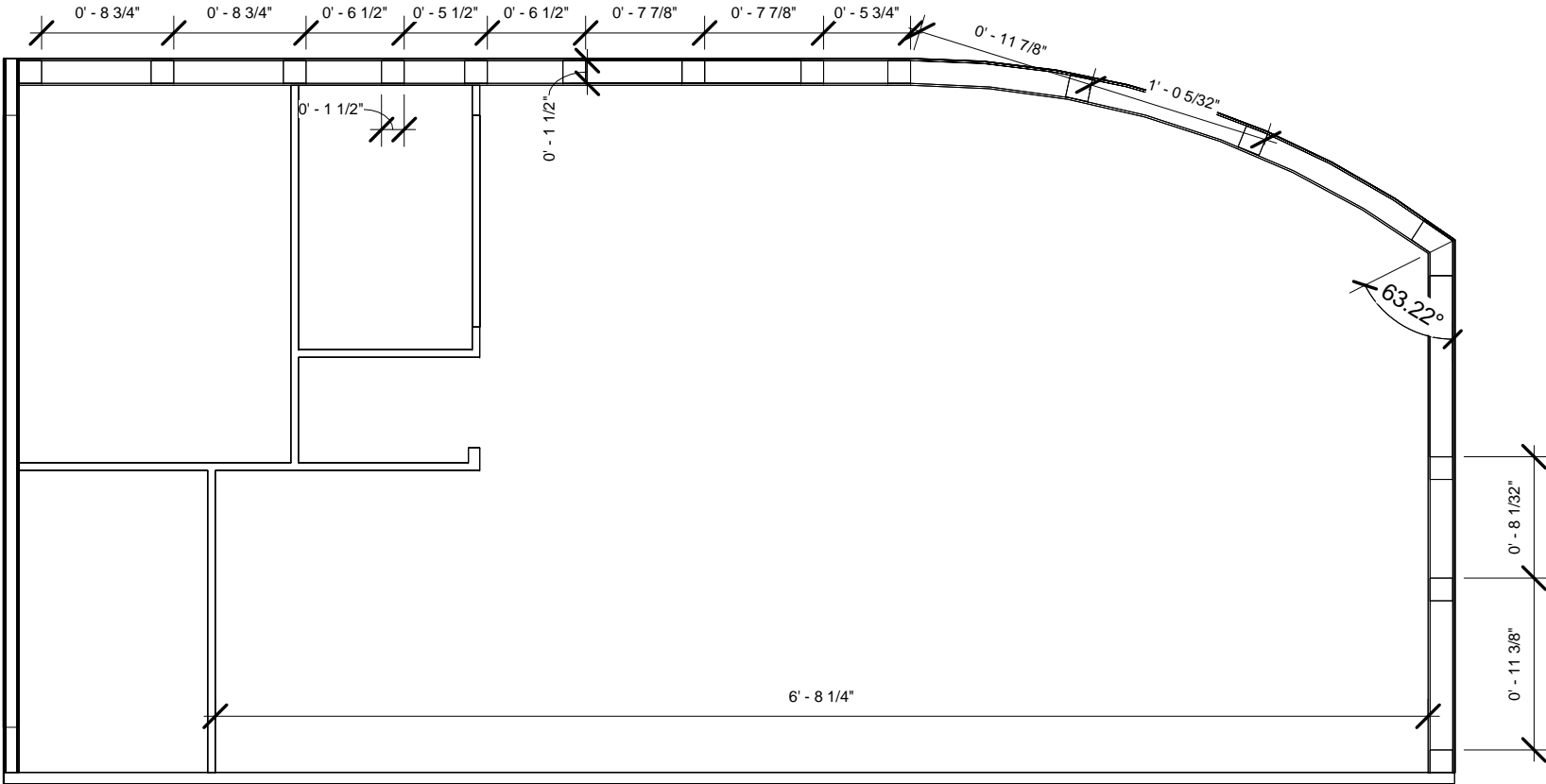
5x8 Off-Road

Side Wall Cutouts

Project number	0001
Date	04/08/16
Drawn by	Clint S.
Checked by	Clint S.
Scale	1" = 1'-0"

101

1 Roof Spars
1" = 1'-0"



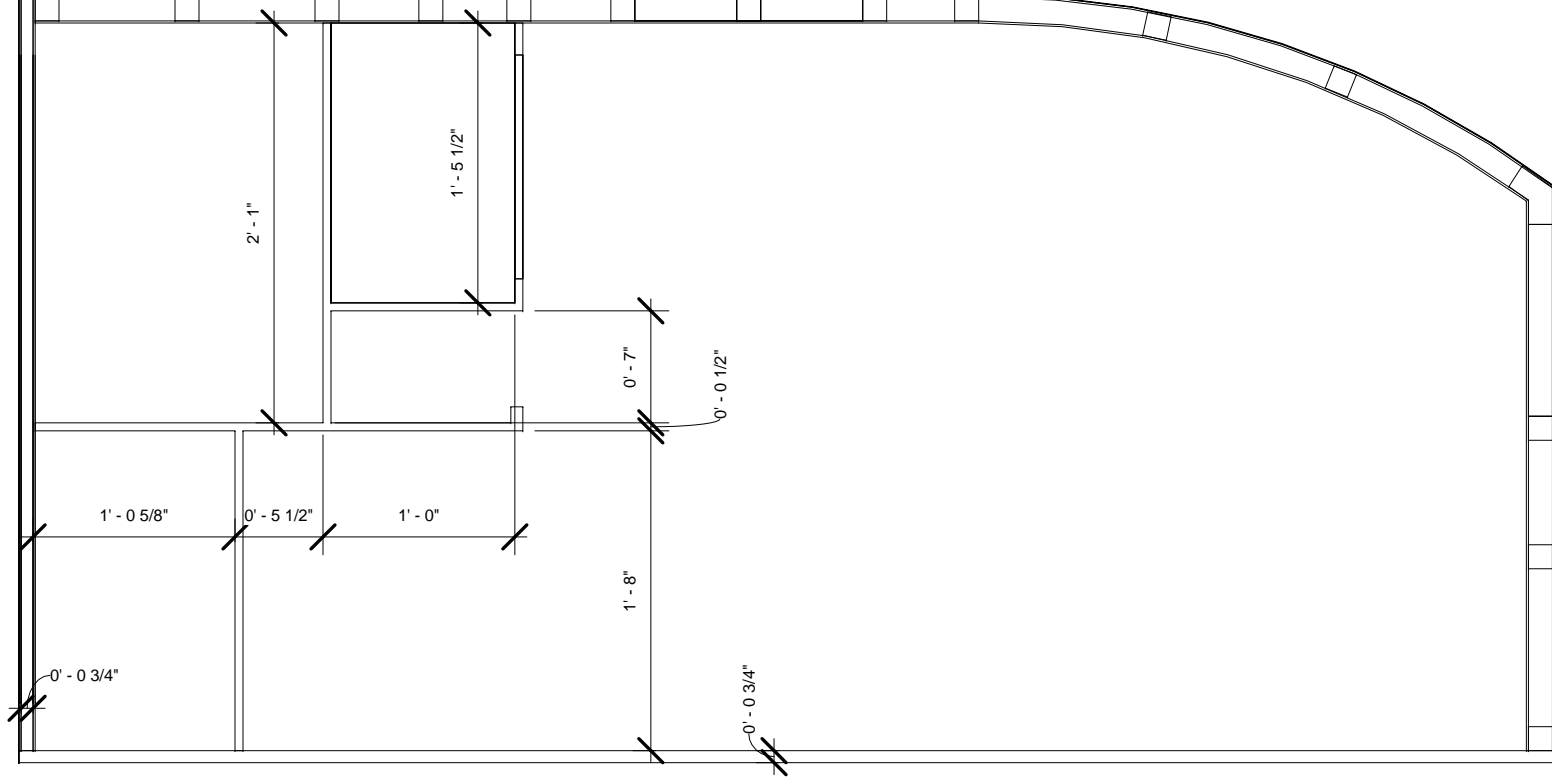
5x8 Off-Road

Roof Spars

Project number	0001	102
Date	04/08/16	
Drawn by	Clint S.	
Checked by	Clint S.	
Scale		1" = 1'-0"

1

Cabinets
1" = 1'-0"

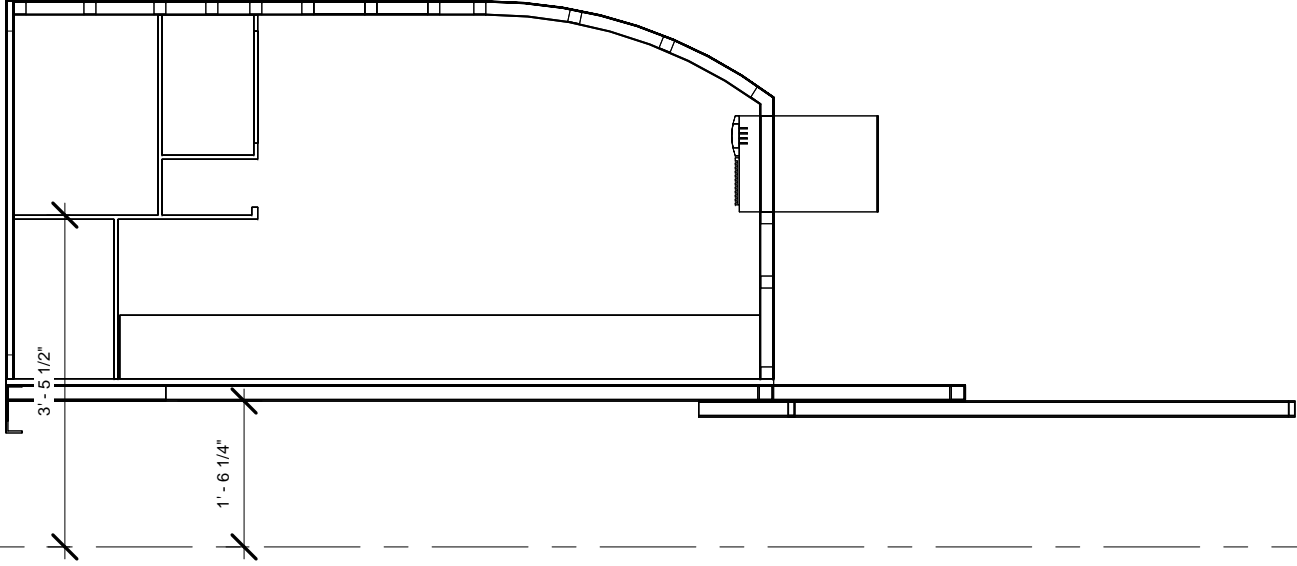


5x8 Off-Road

Cabinets

Project number	0001	103
Date	04/08/16	
Drawn by	Clint S.	
Checked by	Clint S.	Scale
		1" = 1'-0"

Side View
1/2" = 1'-0"

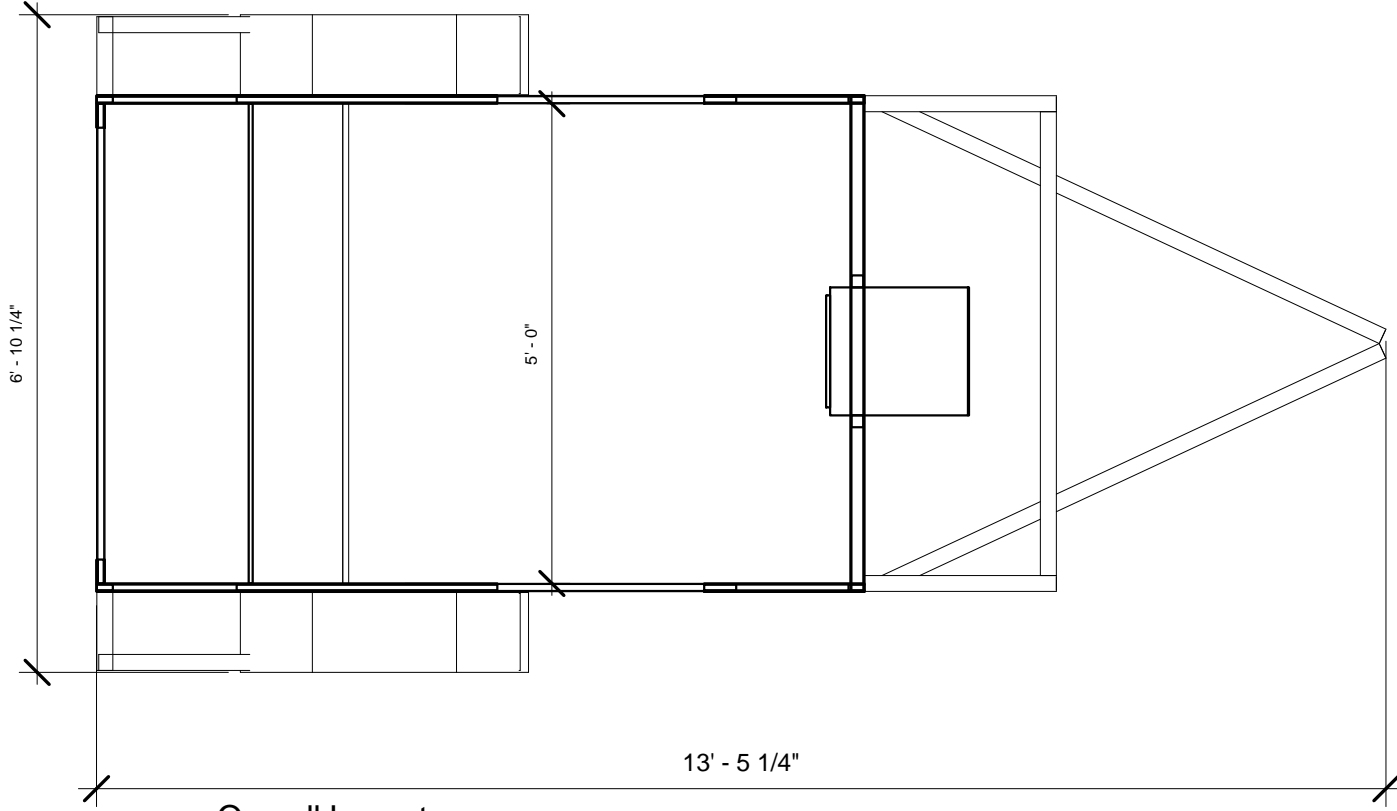


Level 1
0' - 0"

5x8 Off-Road

Side View

Project number	0001	104	
Date	04/08/16		
Drawn by	Clint S.		
Checked by	Clint S.	Scale	1/2" = 1'-0"



1 Overall Layout
1/2" = 1'-0"

5x8 Off-Road	Overall				
	Project number		0001		
	Date		04/08/16		105
	Drawn by		Clint S.		
	Checked by		Clint S.	Scale	1/2" = 1'-0"

Estimated Trailer Weight w/o Running Gear			
Volume	Family	Density	Weight
0.10 CF	1-8 End Wall	47.45 lb/ft ³	4.623081
0.29 CF	3-4 End Wall	47.45 lb/ft ³	13.869243
1.42 CF	4 Plywood	47.45 lb/ft ³	68.045361
1.01 CF	8 Skin	47.45 lb/ft ³	48.460876
0.02 CF	Aluminum End Wall	168.56 lb/ft ³	3.19633
0.59 CF	Angle Steel	490.75 lb/ft ³	293.369492
22.22 CF	Bed	5.00 lb/ft ³	112.455744
0.09 CF	Bumper	490.75 lb/ft ³	43.819995
1.96 CF	C		0
1.76 CF	Cabinets	47.45 lb/ft ³	84.587809
0.09 CF	Fender	490.75 lb/ft ³	43.337344
2.58 CF	Floor	6.24 lb/ft ³	16.315079
0.19 CF	Roof Aluminum Skin	168.56 lb/ft ³	32.070023
1.18 CF	Roof Skin	47.45 lb/ft ³	56.697894
1.34 CF	Roof Spars	35.60 lb/ft ³	48.330917
0.16 CF	Skin	168.56 lb/ft ³	27.453929
35.00 CF			896.633117

5x8 Off-Road

Estimated Weight

Project number 0001

Date 04/08/16

Drawn by Clint S.

Checked by Clint S.

106

Scale